

Did you know?

Every day, many of us wake up, commute to work and spend most of our time focused on routine behaviours.

But every so often the unexpected might happen: a building fire, a veld fire, a vehicle fire or some other fire disaster. Routines change drastically and we are suddenly aware of how fragile our lives and routines can be. Each fire disaster can have lasting effects – people may be seriously injured or killed, and devastating and costly property damage can occur.

We need to be prepared in case of a fire emergency. Key to fire safety is practising specific fire safety and fire prevention behaviours. There are some very simple steps you can take to prevent loss of life and property from fire.

Be Prepared

- Never lock or block fire exits or doorways, halls or stairways. Fire doors provide a way out and slow the spread of fire and smoke. Never prop stairway or other fire doors open.
- Learn your building's evacuation plans. Make sure everyone knows what to do if the fire alarm goes off. Plan and practise your escape plan.
- Make sure your building manager displays evacuation routes in high traffic areas like passages.
- Know the sound of your building's fire alarm and display emergency numbers near all telephones.
- Know who is responsible for maintaining the fire safety systems. Make sure nothing blocks these devices and promptly report any sign of damage or malfunction to the building management.

Regularly carry out a fire-risk assessment in the workplace by identifying any possible fire dangers and risks. Consider these five points when completing a fire safety risk assessment.

Identify Fire Hazards

- Sources of ignition.
- Sources of fuel.
- Sources of oxygen.

Identify People at Risk

- People in and around the premises.
- People who are especially at risk.

Evaluate, Remove or Reduce and Protect Premises from Risk

- Evaluate the risk of a fire starting.
- Evaluate the risk to people from a fire.
- Remove or reduce fire hazards.
- Remove or reduce the risks to people from a fire.
- Protect people by providing fire precautions.

Record, Plan, Inform, Instruct, and Train

- Record any major findings and action you have taken.
- Discuss and work with other responsible people.
- Prepare an emergency plan.
- Inform and instruct relevant people.
- Provide fire safety training.

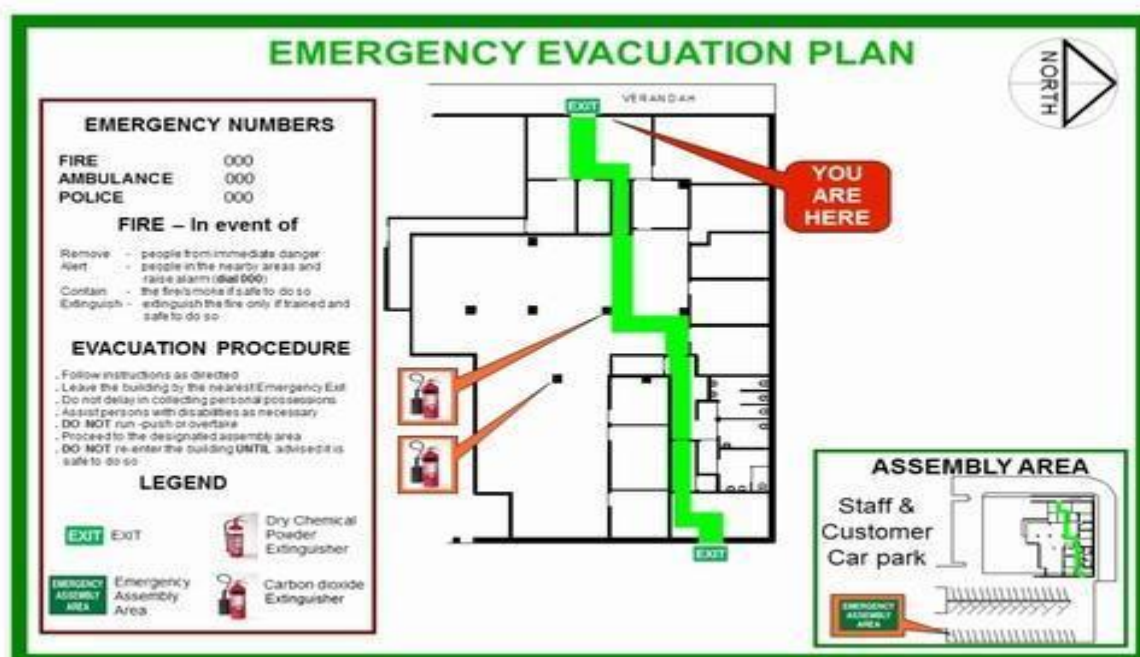
Review

- Review your fire-risk assessment regularly.
- Make changes where necessary.

In the Event of an Emergency

- React immediately. If an alarm sounds and you see smoke or fire, or some other unusual disturbance, immediately exit the building and go to the assembly point.
- Get out and stay out. Once you have escaped, stay out. Under no circumstances should you ever go back into a burning building. Tell the fire department if you know of anyone trapped in the building.

When it comes to fire, don't be scared, be prepared.





Specialised Extinguishers

High performance, specialised fire extinguishers exclusive to CENTA



SPECIFICATIONS	HW Water Additive (9.0L) (AAS002)	HS Corrosion Proof (9.0kg) (AAS035)
Height (mm)	590	540
Diameter (mm)	175	175
Mass Empty (kg)	3.45	3.26
Mass Full (kg)	12.45	12.26
Medium	Water Additive	MAP 5A 5B 90%
Charge (kg)	9	9
Discharge Distance (m)	6.5	14
Working Pressure (kPa)	1500	1500
Paint Coating	Heavy Duty Powder Coating	Heavy Duty Powder Coating
Suitability	B-Class Fires	A,B,C Class Fires



HV Vehicle (9.0L) (AAS015)	D-Class (9.0kg) (AA0910F)	F-Class (6.0L) (AI2400F)	HP Purple K (9.0kg) (AAS025)
590	540	515	540
175	175	162	175
3.45	4.54	2.6	3.26
12.45	13.54	8.6	12.26
Water Additive	D-Class Powder	Wet Chemical	Purple K
9	9	6	9
6.5	2	6.5	14
1500	800	1500	1500
Heavy Duty Powder Coating	Heavy Duty Powder Coating	Stainless Steel	Heavy Duty Powder Coating
Transport Fires	Metallic Fires	Kitchen Fires	Mines & Chemical Industry



Standard Extinguishers



SPECIFICATIONS	1.0kg (AI0119)	1.0kg Black Dome (AI0110F)
Height (mm)	330	290
Diameter (mm)	88.9	88.9
Mass Empty (kg)	0.86	0.87
Mass Full (kg)	1.86	1.87
Medium	ABC Powder	ABC Powder
Charge	Dry Nitrogen	Dry Nitrogen
Discharge Distance (m)	8	8
Working Pressure (kPa)	1500	1500
Paint Coating	Heavy Epoxy	Heavy Epoxy
Compliance	SABS 1910	SABS 1910



1.5kg (AI0146)	1.5kg Black Dome (AI0130F)	2.5kg (AI0216F)	4.5kg (AA0416)
374	335	415	415
88.9	88.9	111	175
1	1	1.31	2.59
2.5	2,5	3.85	7.09
ABC Powder	ABC Powder	ABC Powder	ABC Powder
Dry Nitrogen	Dry Nitrogen	Dry Nitrogen	Dry Nitrogen
8	8	10	14
1500	1500	1500	1500
Heavy Epoxy	Heavy Epoxy	Heavy Epoxy	Heavy Epoxy
SABS 1910	SABS 1910	SABS 1910	SABS 1910



Standard Extinguishers



SPECIFICATIONS	6.0kg (AA0601F)	9.0kg (AA0914)
Height (mm)	432	540
Diameter (mm)	175	175
Mass Empty (kg)	2.82	3.26
Mass Full (kg)	8.82	12.26
Medium	ABC Powder	ABC Powder
Charge	Dry Nitrogen	Dry Nitrogen
Discharge Distance (m)	14	14
Working Pressure (kPa)	1500	1500
Paint Coating	Heavy Epoxy	Heavy Epoxy
Compliance	SABS 1910	SABS 1910



9.0L Water (AA1031F)	9.0L Foam (AA1036)	12kg (AA3032F)
620	620	620
175	175	175
3.61	3.61	3.61
12.61	12.61	15.61
Water	AFFF Foam	ABC Powder
Dry Nitrogen	Dry Nitrogen	Dry Nitrogen
16	10	13
1500	1500	1500
Heavy Epoxy	Heavy Epoxy	Heavy Epoxy
SABS 1910	SABS 1910	SABS 1910



C02 Extinguishers



SPECIFICATIONS	2.0kg Light Alloy (EI0250)	2.0kg Aluminium (EI0111)
Height (mm)	575	535
Diameter (mm)	100	110
Mass Empty (kg)	4.46	3.3
Mass Full (kg)	6.46	5.3
Medium	CO ₂	CO ₂
Charge (kg)	2	2
Discharge Distance (m)	3	3
Working Pressure (kPa)	60 Bar at 20 °C	60 Bar at 20 °C
Filling Ratio	75%	68%
Paint Coating	Heavy Duty Powder Coating	Heavy Duty Powder Coating
Compliance	SANS 1567	SANS 1567



3.5kg Aluminium (EI0151)	5.0kg Light Alloy (EI0550)	5.0kg Aluminium (EI0207)
580	752	666
140	130	151
6.7	9.33	6.6
9.7	14.33	11.6
CO2	CO2	CO2
3.5	5	5
4	4	4
60 Bar at 20 °C	60 Bar at 20 °C	60 Bar at 20 °C
68%	75%	68%
Heavy Duty Powder Coating	Heavy Duty Powder Coating	Heavy Duty Powder Coating
SANS 1567	SANS 1567	SANS 1567



Hose Reels



Specifications	Standard (BB0115)	Stainless Steel Frame (BB0416)	Corrosion Proof (BB0210)
Hose Capacity (m)	30	30	30
Spindle	Mild Steel Plated	Stainless Steel	Stainless Steel
Water Way	Nylon	Nylon	Nylon
Hub Spacer	Mild Steel Electro Galvanised	Stainless Steel	Mild Steel / Heavy Powder Coat
Discs	Mild Steel	Stainless Steel	Mild Steel / Galvanised
Frame	Mild Steel	Stainless Steel	Mild Steel / Galvanised
Coating	Heavy Epoxy	Polished	Heavy Epoxy
Nozzle	Jet / Spray	Jet / Spray	Jet / Spray
Nozzle Material	Nylon	Nylon	Nylon
Frame Mass (kg)	5.86	5.39	5.98
Mass c/w 30m PVC Hose (kg)	15.86	16.34	16.94
Compliance	SABS 543	SABS 543	SABS 543



Fire Hoses

Layflat Hose 10 Bar (65mm) (G76100)



Colour: White
 Length (m): 30
 Inside Diameter (mm): 64mm
 Working Pressure: 10 Bar
 Weight (g/m): 210
 Short Length Bursting (kPa): 3000
 Operating Pressure (kPa): 1000
 Mass (kg): 13
 Packing Dimensions (mm):
 400x400x120

Layflat Hose 16 Bar (65mm) (G71006)



Colour: Red
 Length (m): 30
 Inside Diameter (mm): 64mm
 Working Pressure: 16 Bar
 Weight (g/m): 370
 Short Length Bursting (kPa): 4500
 Operating Pressure (kPa): 1600
 Mass (kg): 13
 Packing Dimensions (mm):
 400x400x120

Layflat Hose 20 Bar (65mm) (G71005)



Colour: Red
 Length (m): 30
 Inside Diameter (mm): 64mm
 Working Pressure: 20 Bar
 Weight (g/m): 650
 Short Length Bursting (kPa): 6000
 Operating Pressure (kPa): 2000
 Mass (kg): 20
 Packing Dimensions (mm):
 400x400x120

Hose Reel Hose EN (B09002)



Colour: Red
 Length (m): 30
 Inside Diameter (mm): 19-20mm
 Working Pressure: 10 Bar
 Weight (g/m): 330
 Short Length Bursting (kPa): 1500
 Operating Pressure (kPa): 1000
 Mass (kg): 10.4

Hose Reel Hose SABS (B09006)



Colour: Red
 Length (m): 30
 Inside Diameter (mm): 19-20mm
 Working Pressure: 12 Bar
 Weight (g/m): 440
 Short Length Bursting (kPa): 1500
 Operating Pressure (kPa): 1200
 Mass (kg): 13.5



Cabinets (Fibre Glass)

4.5kg Extinguisher (Single) (F30000)	9kg Extinguisher (Single) (F40000)
 <p>Manufactured: SA Height (mm): 610 Width (mm): 355 Depth (mm): 250 Mass (kg): 2.66 Lock: Key Type Viewing Window: No</p>	 <p>Manufactured: SA Height (mm): 745 Width (mm): 355 Depth (mm): 250 Mass (kg): 3.77 Lock: Key Type UV Protected: Yes Hinges: Brass Viewing Window: No Water Resistant: Yes Suited to Heavy Vehicles: No Indoor & Outdoor Use: Yes</p>
9kg Extinguisher (Double Door) (F40100)	Hydrant (Single Door) (F90000)
 <p>Manufactured: SA Height (mm): 750 Width (mm): 595 Depth (mm): 275 Mass (kg): 4.8 Lock: Key Tube UV Protected: No Viewing Window: No Water Resistant: No Suited to Heavy Vehicles: No</p>	 <p>Manufactured: SA Height (mm): 565 Width (mm): 465 Depth (mm): 194 Mass (kg): 3.1 Lock: Key Type UV Protected: No Viewing Window: No</p>
Hydrant (Double Door) (F91000)	Hose Reel (Double Door)
 <p>Manufactured: SA Height (mm): 490 Width (mm): 490 Depth (mm): 440 Mass (kg): 4 Lock: Key Tube UV Protected: No Viewing Window: No Water Resistant: No Suited to Heavy Vehicles: No Indoor & Outdoor Use: Yes</p>	 <p>Open Back - F80000 Closed Back - F70000 Manufactured: SA Height (mm): 860 Width (mm): 843 Depth (mm): 310 Mass (kg): 5.47 Lock: Key Tube UV Protected: No Viewing Window: No Water Resistant: No Suited to Heavy Vehicles: No Indoor & Outdoor Use: Yes</p>



Cabinets (Plastic)

4.5kg Extinguisher (Single) (F24050)



Manufactured: SA
Height (mm): 546
Width (mm): 330
Depth (mm): 260
Mass (kg): 2.61
Lock: Yes
Heavy Duty Injection: Yes
UV Protected: No
Viewing Window: No
Hinges: Yes
Water Resistant: No
Suited to Heavy Vehicles: No
Indoor & Outdoor Use: Yes

9kg Extinguisher (Single) (F24001)



Manufactured: Italy
Height (mm): 720
Width (mm): 320
Depth (mm): 250
Mass (kg): 2.66
Lock: Yes
Heavy Duty Injection: Yes
UV Protected: Yes
Viewing Window: Yes
Hinges: Yes
Water Resistant: Yes
Suited to Heavy Vehicles: Yes
Indoor & Outdoor Use: Yes

9kg Extinguisher (Single) (F95000)



Manufactured: SA
Height (mm): 740
Width (mm): 330
Depth (mm): 250
Mass (kg): 3.69
Lock: Yes
Heavy Duty Injection: Yes
UV Protected: No
Viewing Window: No
Hinges: Yes
Water Resistant: No
Suited to Heavy Vehicles: No
Indoor & Outdoor Use: Yes

Hose Reel Cabinet (Double Door) (F25001)



Manufactured: SA
Height (mm): 560
Width (mm): 465
Depth (mm): 190
Mass (kg): 2.4
Lock: Yes
Heavy Duty Injection: Yes
UV Protected: No
Viewing Window: No
Hinges: Yes
Water Resistant: No
Suited to Heavy Vehicles: No
Indoor & Outdoor Use: Yes

Hydrant Cabinet (Single Door) (F25020)



Manufactured: SA
Height (mm): 560
Width (mm): 465
Depth (mm): 190
Mass (kg): 2.4
Lock: Yes
Heavy Duty Injection: Yes
UV Protected: No
Viewing Window: No
Hinges: Yes
Water Resistant: No
Suited to Heavy Vehicles: No
Indoor & Outdoor Use: Yes